

# Cultural Feature Analysis of Lidar Data for the Proposed BLM Farmington Area 2018 Minerals Lease Parcels Northwest of Chaco Culture National Historical Park

---

## Report Index

---








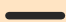


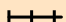




Map Legend .....	Page 2
Area Feature Listing ..	Page 2
Parcel 22 .....	Pages 3-5
Parcel 23 .....	Pages 6-7
Parcel 23 .....	Pages 8-10
Parcel 24 .....	Pages 11-13
Parcel 25 .....	Pages 14-15
Parcel 26 .....	Pages 16-17
Parcel 27 .....	Pages 18-20
Parcel 28 .....	Pages 21-22

Data and Report  
Created by:  
Richard Friedman  
July and August 2018  
for:



Archaeology Southwest

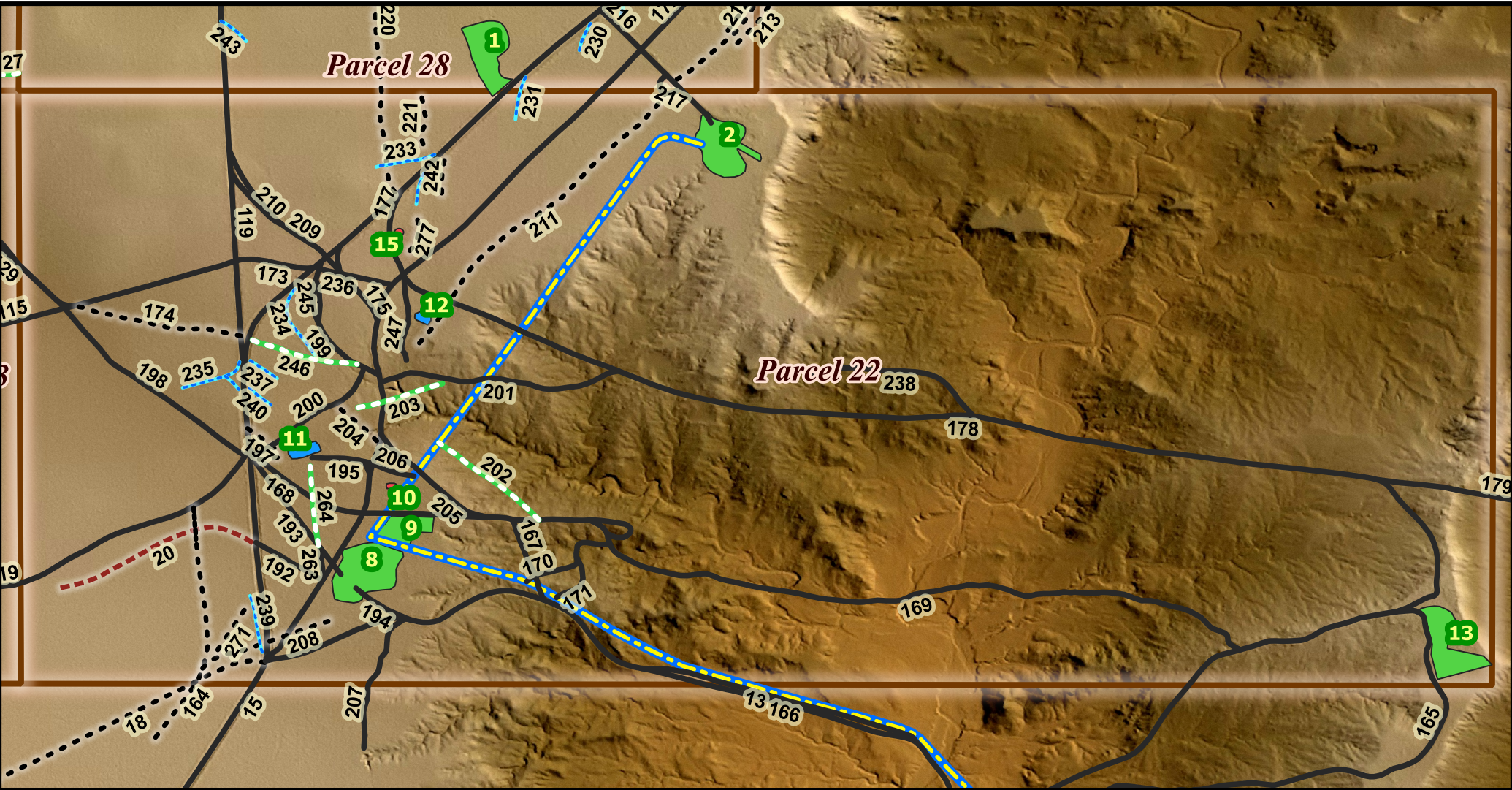
## General legend for all included maps

Map Legend	
	Proposed Lease Parcels
Linear Features	
	Drainage Ditch
	Linear Breach in Dune
	Linear Feature - Probable Old Two Track
	Linear Feature of Unknown Origin - 3-5m
	Old Road, Two Track, or Trail
	Pipeline
	Road or Two Track
	Stock, Game, Hiking, or Horse Trail
	Underground Water Line
	Fence Line
Area Features	
	Earthen Dam
	Home Site
	Stock Pond
	Surface Disturbance - Unknown Cause

## Individual map feature listing for culturally disturbed areas

Feature ID	Feature Type	Parcel Number	Comments
1	Home Site	28	Appears to be an abandoned home site
2	Home Site	22	Home Site
3	Stock Pond	28	Possible catch pond or culturally enhance blow out
4	Surface Disturbance - Unknown Cause	28	Unknown cause for surface disturbance - has several two tracks or trails leading to it
5	Stock Pond	23	Stock pond or tank
6	Earthen Dam	23	Earthen Dam
7	Earthen Dam		Earthen Dam
8	Home Site	22	Home Site
9	Home Site	22	Home Site and Field
10	Surface Disturbance - Unknown Cause	22	Unknown Cause
11	Stock Pond	22	Stock Pond
12	Stock Pond	22	Washed Out Stock Pond
13	Home Site	22	Home Site and Field
14	Home Site	29	Home Site
15	Surface Disturbance - Unknown Cause	22	Circular Feature - Unknown Origin

# Parcel 22



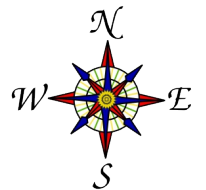
Map and Data  
Created by:  
Richard Friedman  
August 2018  
for:

 Archaeology Southwest

100 0 100 200 300 400 m



Scale in Meters





# Parcel 22 Feature Listing

Feature ID	Legend Group	Type	Comments
13	Underground Water Line	Water Line	Underground
15	Road or Two Track	Maintained Road	
18	Old Road, Two Track, or Trail	Old Two Track	Highly re-vegetated - possible old pipeline road
19	Road or Two Track	One Lane Road	Possible light maintenance
20	Linear Feature - Probable Old Two Track	Unknown Linear Feature	Probable old two track - very old or very limited use - not visible in aerial photos - only visible with illumination from the northwest
21	Stock, Game, Hiking, or Horse Trail	Linear Swale	5m wide linear NS feature cutting across low dune - approx. 45 meters west of section line - may be associated with section line - not visible in aerial photos
115	Road or Two Track	Two Track	
119	Road or Two Track	Two Track	Shows signs of construction/maintenance
125	Road or Two Track	Two Track and Game/Stock Trail	Appears to be an abandoned Two track that is now a game/stock trail
126	Stock, Game, Hiking, or Horse Trail	Stock/Game Trail	Incised stock/game trail
127	Stock, Game, Hiking, or Horse Trail	Stock/Game Trail	
128	Stock, Game, Hiking, or Horse Trail	Stock/Game Trail	
129	Road or Two Track	Two Track	
130	Stock, Game, Hiking, or Horse Trail	Stock/Game Trail	
161	Stock, Game, Hiking, or Horse Trail	Stock/Game Trail	
162	Road or Two Track	Two Track	Alternate bad weather route
164	Old Road, Two Track, or Trail	Probable Abandoned Two Lane Road	Faint trace that appears to have faint bar ditches - look very similar to maintained road to the east
165	Road or Two Track	Maintained Road	
166	Road or Two Track	Two Track	Alternate Route
167	Road or Two Track	Two Track	Shows signs of maintenance
168	Road or Two Track	Two Track	
169	Road or Two Track	Two Track	All but the western most portion appears abandoned
170	Road or Two Track	Two Track	
171	Road or Two Track	Two Track	
172	Road or Two Track	Two Track	Poor condition - some sections appear impassible
173	Road or Two Track	Two Track	
174	Old Road, Two Track, or Trail	Abandoned Two Track	Appears to be used as a Stack/Game Trail
175	Road or Two Track	Two Track	
176	Road or Two Track	Two Track	
177	Road or Two Track	Two Track	
178	Road or Two Track	Two Track	Shows signs of construction and minimal maintenance
179	Road or Two Track	Two Track	Shows signs of construction and minimal maintenance
192	Road or Two Track	Two Track	
193	Road or Two Track	Two Track	To home - maintained
194	Road or Two Track	Two Track	To home
195	Road or Two Track	Two Track	
196	Old Road, Two Track, or Trail	Abandoned Two Track	

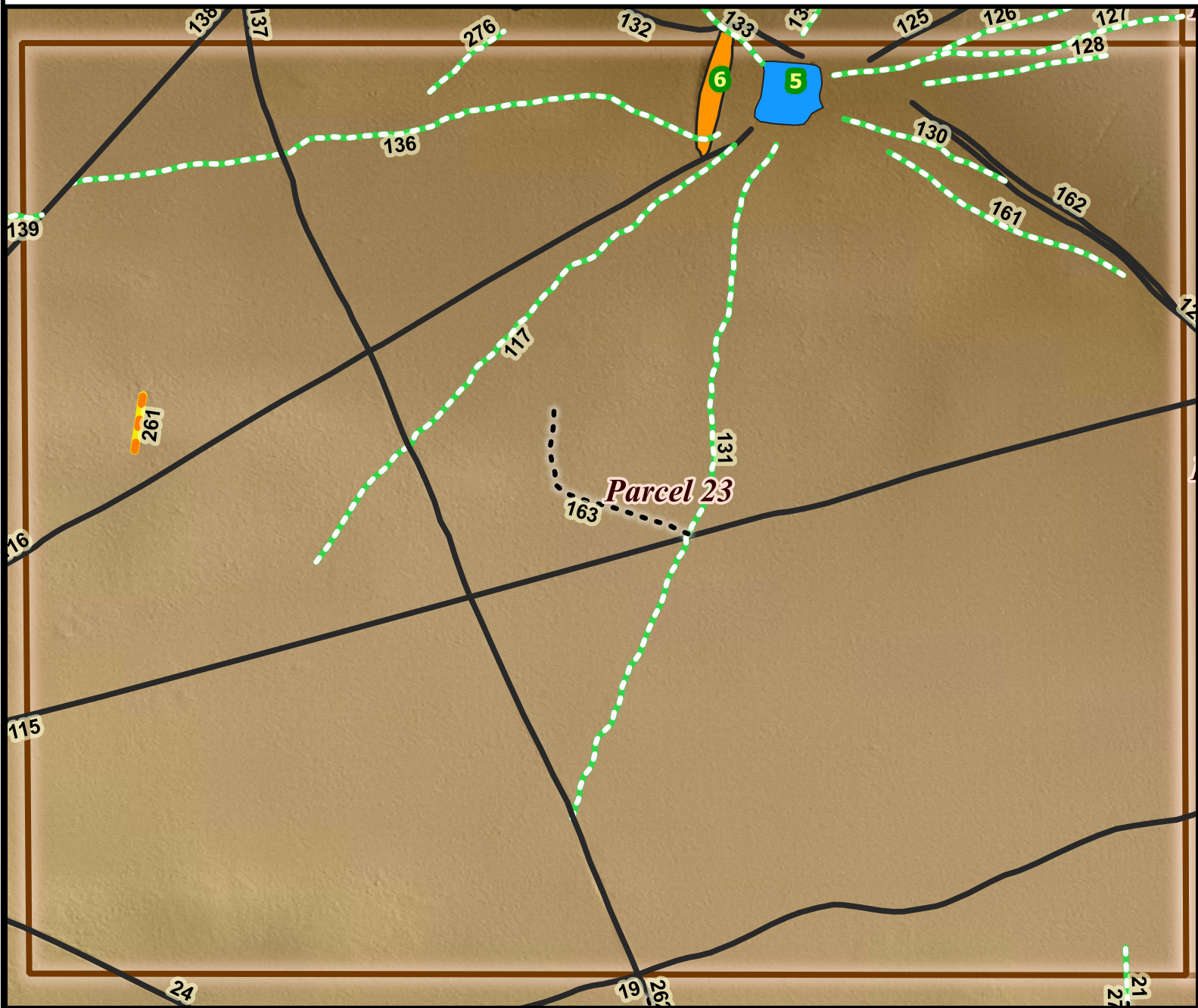


# Parcel 22 Feature Listing

Page 2 of 2

Feature ID	Legend Group	Type	Comments
197	Old Road, Two Track, or Trail	Abandoned Two Track	
198	Road or Two Track	Two Track	
199	Road or Two Track	Two Track	
200	Road or Two Track	Two Track	
201	Road or Two Track	Two Track	
202	Stock, Game, Hiking, or Horse Trail	Linear Feature Unknow Origin	Broken linear feature
203	Stock, Game, Hiking, or Horse Trail	Linear Feature Unknow Origin	Probable old broken two track
204	Old Road, Two Track, or Trail	Old Two Track	
205	Road or Two Track	Two Track	
206	Road or Two Track	Two Track	
207	Road or Two Track	Two Track	
208	Old Road, Two Track, or Trail	Abandoned Road	Appears to be an old abandoned road to home site
209	Road or Two Track	Two Track	
210	Road or Two Track	Two Track	
211	Old Road, Two Track, or Trail	Abandoned Two Track	
212	Old Road, Two Track, or Trail	Abandoned Two Track	
213	Old Road, Two Track, or Trail	Abandoned Two Track	
216	Road or Two Track	Two Track	Road to home site
217	Road or Two Track	Two Track	
220	Old Road, Two Track, or Trail	Old Two Track Stock/Game Trail	
221	Old Road, Two Track, or Trail	Abandoned Two Track	
225	Old Road, Two Track, or Trail	Probable Old Two Track	
229	Drainage Ditch	Drainaige Ditch	
230	Drainage Ditch	Drainaige Ditch	
231	Drainage Ditch	Drainaige Ditch	
232	Drainage Ditch	Drainaige Ditch	
233	Drainage Ditch	Drainaige Ditch	
234	Drainage Ditch	Drainaige Ditch	
235	Drainage Ditch	Drainaige Ditch	
236	Road or Two Track	Two Track	
237	Drainage Ditch	Old Drainage Ditch	
238	Road or Two Track	Two Track	
239	Drainage Ditch	Drainaige Ditch	
240	Drainage Ditch	Drainaige Ditch	
241	Drainage Ditch	Possible Drainaige Ditch	
242	Old Road, Two Track, or Trail	Probable Old Two Track	
243	Drainage Ditch	Drainaige Ditch	
245	Road or Two Track	Two Track	
246	Stock, Game, Hiking, or Horse Trail	Stock/Game Trail	
247	Road or Two Track	Two Track	
263	Road or Two Track	Two Track	Road to home site

# Parcel 23



Map and Data  
Created by:  
Richard Friedman  
August 2018  
for:

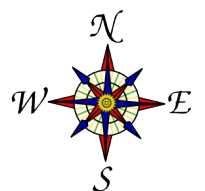
75 0 75 150 225 300 m



Scale in Meters



Archaeology Southwest

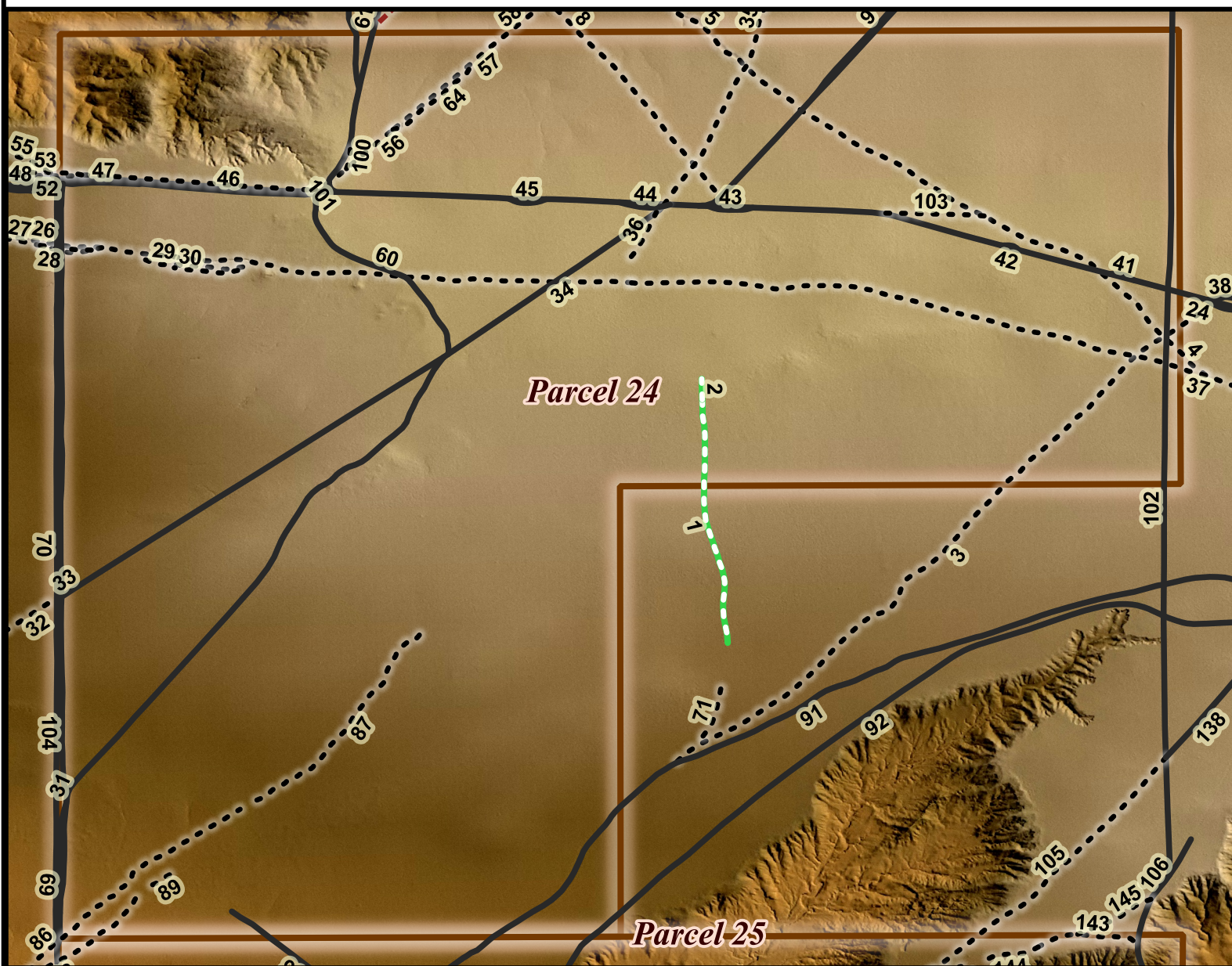


## Parcel 23 Feature Listing

Feature ID	Legend Group	Type	Comments
19	Road or Two Track	One Lane Road	Possible light maintenance
21	Stock, Game, Hiking, or Horse Trail	Linear Swale	5m wide linear NS feature cutting across low dune - approx. 45 meters west of section line - may be associated with section line - not visible in aerial photos
24	Road or Two Track	One Lane Plus Road	Light Maintenance - probable pipeline road
115	Road or Two Track	Two Track	
116	Road or Two Track	Two Track	Also a game/stock trail
117	Stock, Game, Hiking, or Horse Trail	Game/Stock Trail	
125	Road or Two Track	Two Track and Game/Stock Trail	Appears to be an abandoned Two track that is now a game/stock trail
126	Stock, Game, Hiking, or Horse Trail	Stock/Game Trail	Incised stock/game trail
127	Stock, Game, Hiking, or Horse Trail	Stock/Game Trail	
128	Stock, Game, Hiking, or Horse Trail	Stock/Game Trail	
129	Road or Two Track	Two Track	
130	Stock, Game, Hiking, or Horse Trail	Stock/Game Trail	
131	Stock, Game, Hiking, or Horse Trail	Stock/Game Trail	
132	Road or Two Track	Two Track	
133	Stock, Game, Hiking, or Horse Trail	Stock/Game Trail	
134	Stock, Game, Hiking, or Horse Trail	Stock/Game Trail	
136	Stock, Game, Hiking, or Horse Trail	Stock/Game Trail	
137	Road or Two Track	Two Track	Seldom used - possibly abandoned
138	Road or Two Track	Two Track	
139	Stock, Game, Hiking, or Horse Trail	Stock/Game Trail	
161	Stock, Game, Hiking, or Horse Trail	Stock/Game Trail	
162	Road or Two Track	Two Track	Alternate bad weather route
163	Old Road, Two Track, or Trail	Probable Stock/Game Trail	Very faint and narrow linear trace
261	Linear Breach in Dune	Breach in Dune	Appears to be a manmade cut through a longitudinal dune - shows signs of erosion - possibly for drainage and or pasture irrigation
262	Old Road, Two Track, or Trail	Abandoned Two Track	Heavily incised
276	Stock, Game, Hiking, or Horse Trail	Stock/Game Trail	Probable Stock/Game trail to nearby tank



# Parcel 24



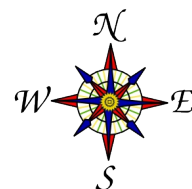
Map and Data  
Created by:  
Richard Friedman  
August 2018  
for:

 Archaeology Southwest

100 0 100 200 300 400 m



Scale in Meters



# Parcel 24 Feature Listing

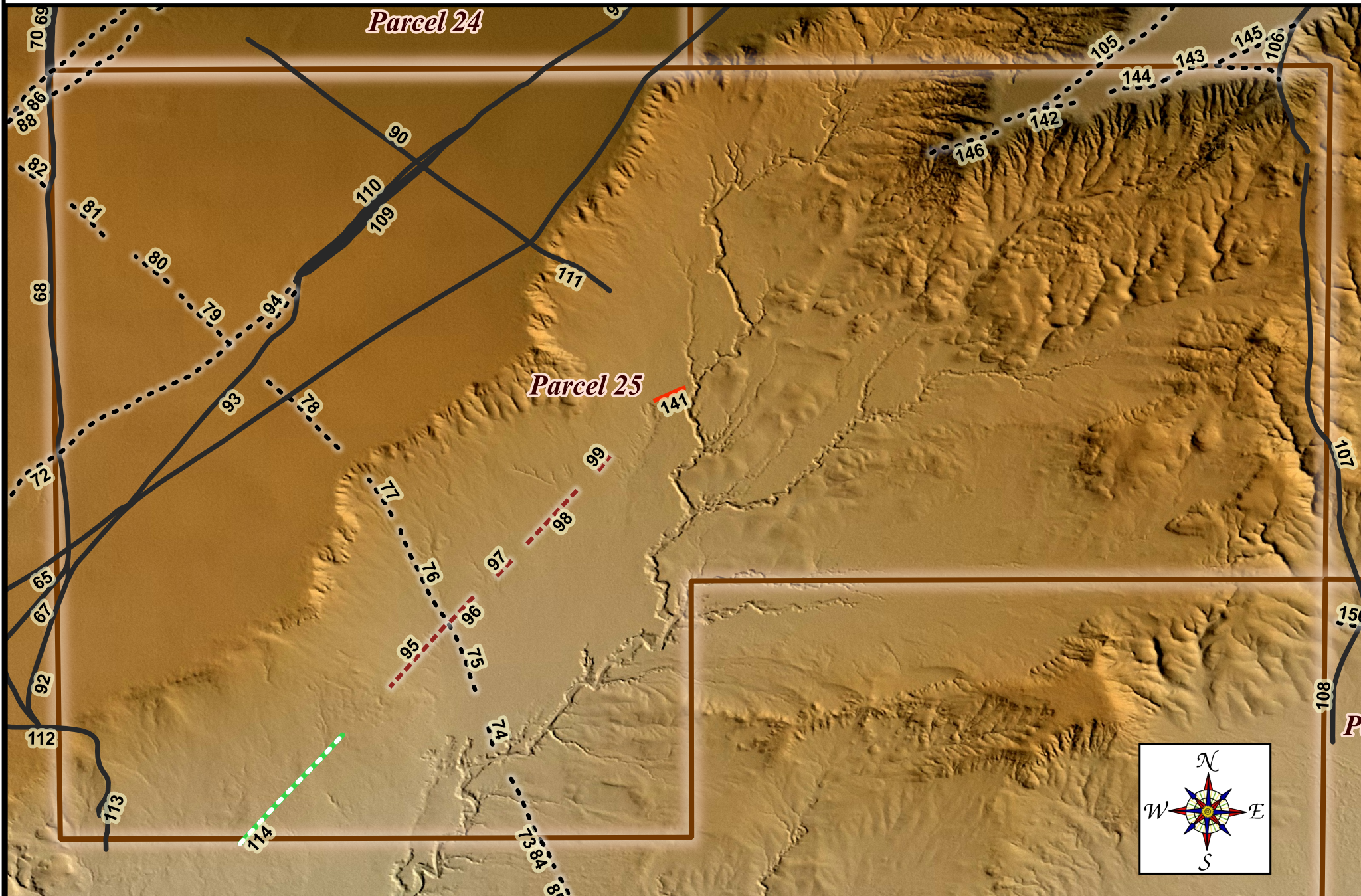
Feature ID	Legend Group	Type	Comments
1	Stock, Game, Hiking, or Horse Trail	Trail	
2	Stock, Game, Hiking, or Horse Trail	Trail	
3	Old Road, Two Track, or Trail	Old Two Track	Appears to be an old abandoned unimproved vehicle road
4	Old Road, Two Track, or Trail	Old Two Track	Appears to be an old abandoned unimproved vehicle road
5	Old Road, Two Track, or Trail	Old Two Track	Appears to be an old abandoned unimproved vehicle road - deeply incised
6	Old Road, Two Track, or Trail	Old Two Track	Appears to be an old abandoned unimproved vehicle road
8	Old Road, Two Track, or Trail	Old Two Track	Appears to still get occasional use - both wheel tracks still visible
9	Road or Two Track	Two Track	Shows indications of previous maintenance - appears to still be in use
12	Road or Two Track	Two Track	Parallel alternate trail to Index-10
24	Road or Two Track	One Lane Plus Road	Light Maintenance - probable pipeline road
25	Road or Two Track	One Lane Plus Road	Light Maintenance - probable pipeline road
26	Old Road, Two Track, or Trail	Old Two Track	Appears to be an old abandoned unimproved vehicle road - highly eroded in some areas, often has denser vegetation than surrounding terrain
27	Old Road, Two Track, or Trail	Old Two Track	Appears to be an old abandoned unimproved vehicle road - bad weather route - often has denser vegetation than surrounding terrain
28	Old Road, Two Track, or Trail	Old Two Track	Appears to be an old abandoned unimproved vehicle road - bad weather route - often has denser vegetation than surrounding terrain
29	Old Road, Two Track, or Trail	Old Two Track	Appears to be an old abandoned unimproved vehicle road - bad weather route - often has denser vegetation than surrounding terrain
30	Old Road, Two Track, or Trail	Old Two Track	Appears to be an old abandoned unimproved vehicle road - bad weather route - often has denser vegetation than surrounding terrain
31	Road or Two Track	Two Track	Lightly used
32	Old Road, Two Track, or Trail	Old Two Track	Appears abandoned - probable pipeline road
33	Road or Two Track	Two Track	Appears to be recently abandoned or seldom used - probable pipeline road
34	Road or Two Track	Two Track	Appears to be seldom used - probable pipeline road
35	Old Road, Two Track, or Trail	Old Two Track	Appears to be recently abandoned
36	Old Road, Two Track, or Trail	Old Two Track	Appears to be an old abandoned unimproved vehicle road - very slight visual evidence of road in 2009 orthos - not visible in 2016 ortho
37	Old Road, Two Track, or Trail	Old Two Track	Appears to still get occasional use - visible in 2009 ortho - slightly visible in 2016 ortho
38	Road or Two Track	Two Track	Bad weather route
39	Road or Two Track	Two Track	Bad weather route
40	Road or Two Track	Two Track	Bad weather route
41	Road or Two Track	Two Track	Bad weather route
42	Road or Two Track	Two Track	Bad weather route
43	Road or Two Track	Two Track	Bad weather route
44	Road or Two Track	Two Track	Bad weather route
45	Road or Two Track	Two Track	Bad weather route
46	Road or Two Track	Two Track	Bad weather route
47	Road or Two Track	Two Track	Bad weather route
48	Road or Two Track	Two Track	Bad weather route
49	Road or Two Track	Two Track	Bad weather route
50	Road or Two Track	Two Track	Bad weather route

# Parcel 24 Feature Listing

Feature ID	Legend Group	Type	Comments
51	Road or Two Track	Two Track	Bad weather route
52	Old Road, Two Track, or Trail	Old Two Track	Bad weather route - revegetated - abandoned
53	Old Road, Two Track, or Trail	Old Two Track	Bad weather route - deeply incised- revegetated - abandoned
54	Old Road, Two Track, or Trail	Probable Old Two Track	Possible old two track or drainage - deeply incised - revegetated
55	Old Road, Two Track, or Trail	Probable Old Two Track	Possible old two track -very faint on grid and ortho photos - revegetated
56	Old Road, Two Track, or Trail	Old Two Track	Abandoned Two Track - possibly an old pipeline road
57	Old Road, Two Track, or Trail	Abandoned Two Track	Old two track or drainage - deeply incised - revegetated - possible old pipeline road
58	Old Road, Two Track, or Trail	Old Two Track	Abandoned Two Track - possibly an old pipeline road
59	Old Road, Two Track, or Trail	Old Two Track	Abandoned Two Track - possibly an old pipeline road
60	Road or Two Track	Two Track	Lightly used - not maintained
61	Road or Two Track	Two Track	Deeply incised on northern end
62	Road or Two Track	Two Track	Possibly abandoned
63	Linear Feature - Probable Old Two Track	Cultural Feature	Possible old road or two track
64	Old Road, Two Track, or Trail	Abandoned Two Track	Old alternate bad weather route
68	Road or Two Track	Two Track	Lightly Used
69	Road or Two Track	Two Track	Lightly Used - alternate route
70	Road or Two Track	Two Track	Section line - fence line road on west side of section line
71	Old Road, Two Track, or Trail	Abandoned Two Track	
86	Old Road, Two Track, or Trail	Abandoned Two Track	Looks to be an abandoned two track - could also be a game/stock trail
87	Old Road, Two Track, or Trail	Abandoned Two Track	Looks to be an abandoned two track - could also be a game/stock trail
88	Old Road, Two Track, or Trail	Abandoned Two Track	Looks to be an abandoned two track - could also be a game/stock trail
89	Old Road, Two Track, or Trail	Abandoned Two Track	Looks to be an abandoned two track - could also be a game/stock trail
90	Road or Two Track	Abandoned Two Track	
91	Road or Two Track	Two Track	
92	Road or Two Track	Two Track	
100	Old Road, Two Track, or Trail	Abandoned Two Track	Not visible in 2009 or 2016 ortho photos
101	Road or Two Track	Two Track	
102	Road or Two Track	Two Track	Section line road
103	Old Road, Two Track, or Trail	Probable Old Two Track	Not visible on 2009 or 2016 ortho photography
104	Road or Two Track	Two Track	Section line road - east side
105	Old Road, Two Track, or Trail	Old Two Track	
106	Road or Two Track	Two Track	Evidence of road construction and maintenance
109	Road or Two Track	Two Track	Alternate bad weather route
110	Road or Two Track	Two Track	Alternate bad weather route
138	Road or Two Track	Two Track	
142	Old Road, Two Track, or Trail	Abandoned Two Track	Abandoned two track - possible stock/game trail
143	Old Road, Two Track, or Trail	Abandoned Two Track	
144	Old Road, Two Track, or Trail	Abandoned Two Track	
145	Old Road, Two Track, or Trail	Abandoned Two Track	
146	Old Road, Two Track, or Trail	Probable Stock/Game Trail	



# Parcel 25





# Parcel 25 Feature Listing

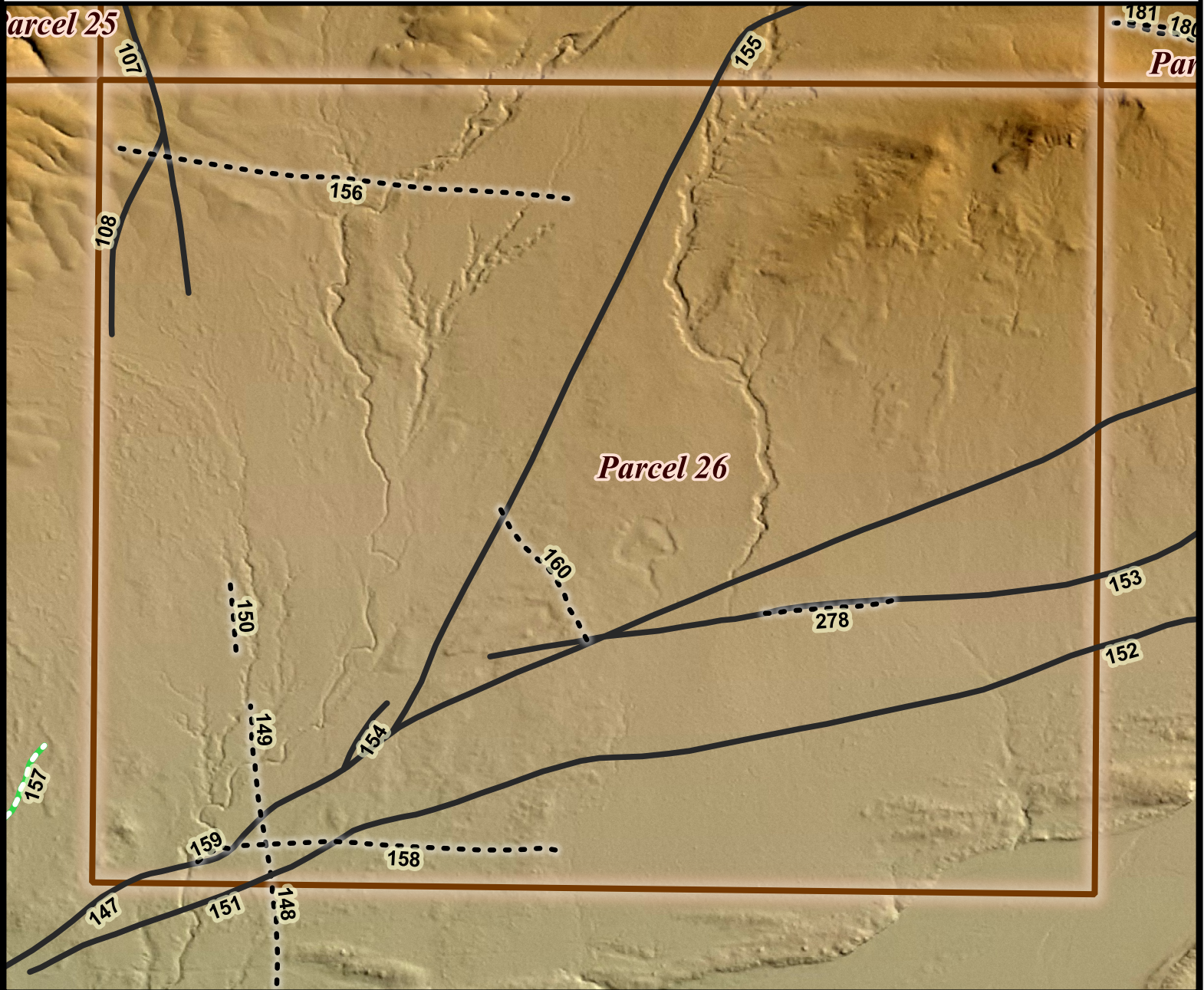
Feature ID	Legend Group	Type	Comments
65	Road or Two Track	Two Track	Lightly Used
66	Road or Two Track	Two Track	Lightly Used
67	Road or Two Track	Two Track	Lightly Used
68	Road or Two Track	Two Track	Lightly Used
69	Road or Two Track	Two Track	Lightly Used - alternate route
70	Road or Two Track	Two Track	Section line - fence line road on west side of section line
72	Old Road, Two Track, or Trail	Abandoned Two Track	Deeply incised in some areas - may now be a stock/game trail
73	Old Road, Two Track, or Trail	Abandoned Two Track	
74	Old Road, Two Track, or Trail	Abandoned Two Track	
75	Old Road, Two Track, or Trail	Abandoned Two Track	
76	Old Road, Two Track, or Trail	Abandoned Two Track	
77	Old Road, Two Track, or Trail	Abandoned Two Track	
78	Old Road, Two Track, or Trail	Abandoned Two Track	
79	Old Road, Two Track, or Trail	Abandoned Two Track	
80	Old Road, Two Track, or Trail	Abandoned Two Track	
81	Old Road, Two Track, or Trail	Abandoned Two Track	
82	Old Road, Two Track, or Trail	Abandoned Two Track	
83	Old Road, Two Track, or Trail	Abandoned Two Track	
84	Old Road, Two Track, or Trail	Abandoned Two Track	
85	Old Road, Two Track, or Trail	Abandoned Two Track	
86	Old Road, Two Track, or Trail	Abandoned Two Track	Looks to be an abandoned two track - could also be a game/stock trail
88	Old Road, Two Track, or Trail	Abandoned Two Track	Looks to be an abandoned two track - could also be a game/stock trail
89	Old Road, Two Track, or Trail	Abandoned Two Track	Looks to be an abandoned two track - could also be a game/stock trail
90	Road or Two Track	Abandoned Two Track	
91	Road or Two Track	Two Track	
92	Road or Two Track	Two Track	
93	Road or Two Track	Two Track	
94	Old Road, Two Track, or Trail	Probable Old Two Track	Probable abandoned alternate route two track
95	Linear Feature - Probable Old Two Track	Cultural Feature	Unknown origin - probable vehicle trail - approximately 2m wide
96	Linear Feature - Probable Old Two Track	Cultural Feature	Unknown origin - probable vehicle trail - approximately 2m wide
97	Linear Feature - Probable Old Two Track	Cultural Feature	Unknown origin - probable vehicle trail - approximately 2m wide
98	Linear Feature - Probable Old Two Track	Cultural Feature	Unknown origin - probable vehicle trail - approximately 2m wide
99	Linear Feature - Probable Old Two Track	Cultural Feature	Unknown origin - probable vehicle trail - approximately 2m wide
102	Road or Two Track	Two Track	Section line road
105	Old Road, Two Track, or Trail	Old Two Track	
106	Road or Two Track	Two Track	Evidence of road construction and maintenance
107	Road or Two Track	Two Track	Evidence of road construction and maintenance
108	Road or Two Track	Two Track	Evidence of road construction and maintenance
109	Road or Two Track	Two Track	Alternate bad weather route
110	Road or Two Track	Two Track	Alternate bad weather route

# Parcel 25 Feature Listing

Feature ID	Legend Group	Type	Comments
111	Road or Two Track	Two Track	Abandoned
112	Road or Two Track	Two Track	Seldom used
113	Road or Two Track	Two Track	Alternate bad weather route - possibly abandoned
114	Stock, Game, Hiking, or Horse Trail	Unknown Cultural Feature	Unknown origin - probable vehicle trail - approximately 2m wide
141	Linear Feature of Unknown Origin - 3-5m	Unknown Cultural Feature	Unknown origin - approx. 3m wide and 0.6m deep
142	Old Road, Two Track, or Trail	Abandoned Two Track	Abandoned two track - possible stock/game trail
143	Old Road, Two Track, or Trail	Abandoned Two Track	
144	Old Road, Two Track, or Trail	Abandoned Two Track	
145	Old Road, Two Track, or Trail	Abandoned Two Track	
146	Old Road, Two Track, or Trail	Probable Stock/Game Trail	
156	Old Road, Two Track, or Trail	Probable Old Two Track	

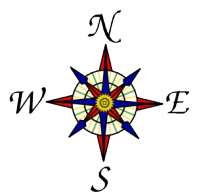
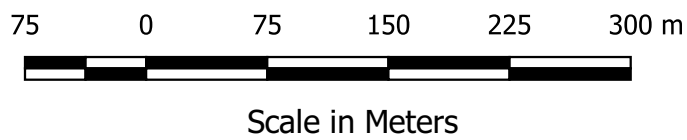


# Parcel 26



Map and Data  
Created by:  
Richard Friedman  
August 2018  
for:

 Archaeology Southwest

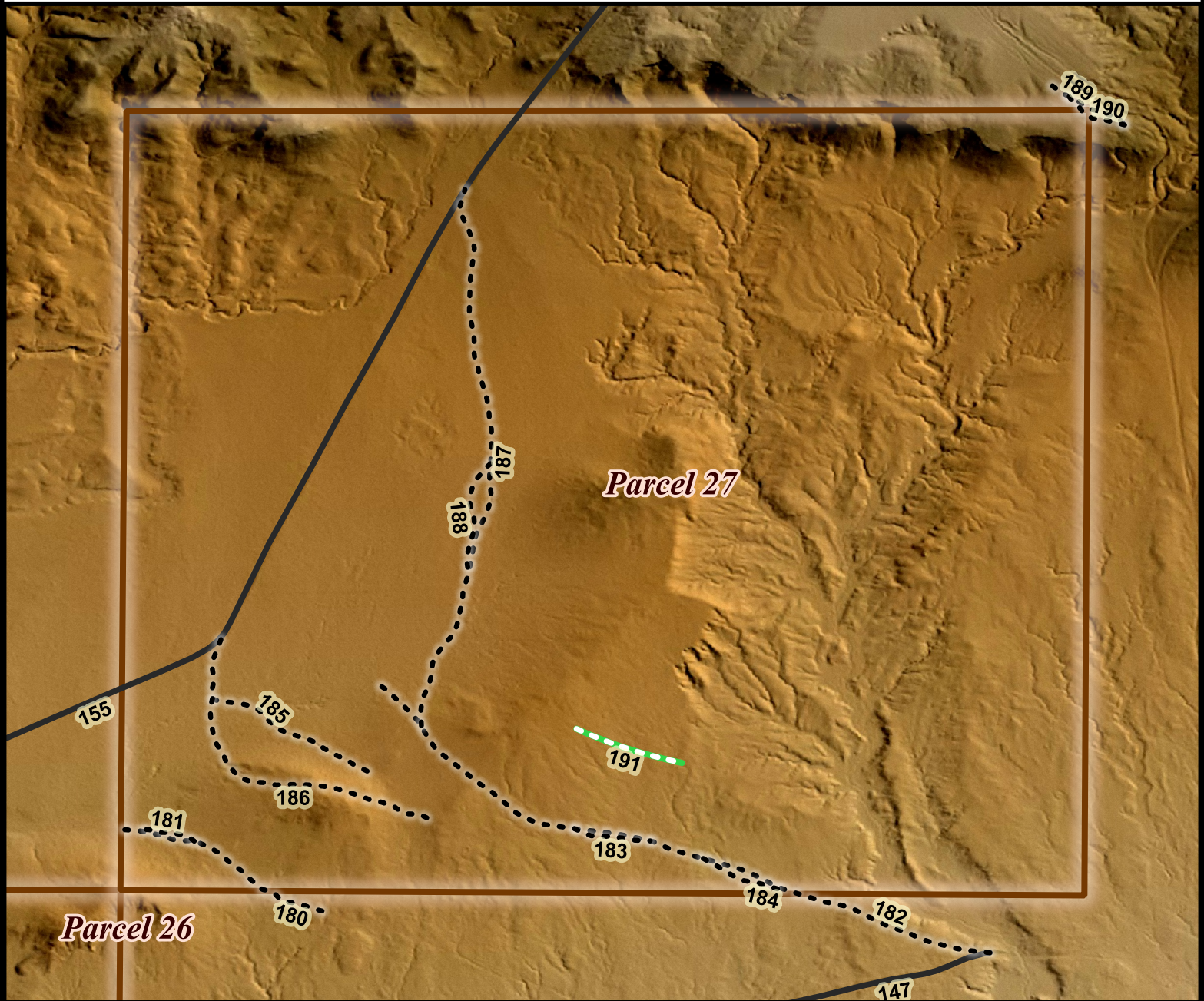


## Parcel 26 Feature Listing

Feature ID	Legend Group	Type	Comments
107	Road or Two Track	Two Track	Evidence of road construction and maintenance
108	Road or Two Track	Two Track	Evidence of road construction and maintenance
147	Road or Two Track	Maintained Road	Shows signs of occasional maintenance and moderate construction
148	Old Road, Two Track, or Trail	Abandoned Road	Single lane road - shows possible signs of construction
149	Old Road, Two Track, or Trail	Abandoned Road	Single lane road - shows possible signs of construction
150	Old Road, Two Track, or Trail	Abandoned Road	Single lane road - shows possible signs of construction
151	Road or Two Track	Two Track	Probably Abandoned
152	Road or Two Track	Two Track	Probably Abandoned
153	Road or Two Track	Two Track	Probably Abandoned
154	Road or Two Track	Two Track	Probably Abandoned
155	Road or Two Track	Two Track	Probably Abandoned - possibly an old pipeline road
156	Old Road, Two Track, or Trail	Probable Old Two Track	
157	Stock, Game, Hiking, or Horse Trail	Stock/Game Trail	
158	Old Road, Two Track, or Trail	Probable Stock/Game Trail	Very faint and narrow linear trace
159	Old Road, Two Track, or Trail	Probable Stock/Game Trail	Very faint and narrow linear trace
160	Old Road, Two Track, or Trail	Probable Stock/Game Trail	Very faint and narrow linear trace
180	Old Road, Two Track, or Trail	Abandoned Two Track	Probable abandoned two track
181	Old Road, Two Track, or Trail	Abandoned Two Track	Probable abandoned two track
278	Old Road, Two Track, or Trail	Abandoned Two Track	Probable Abandoned old two track - alternate bad weather route



# Parcel 27



100 0 100 200 300 400 m

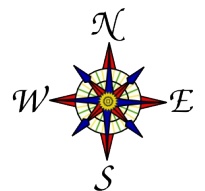


Scale in Meters

Map and Data  
Created by:  
Richard Friedman  
August 2018  
for:



Archaeology Southwest

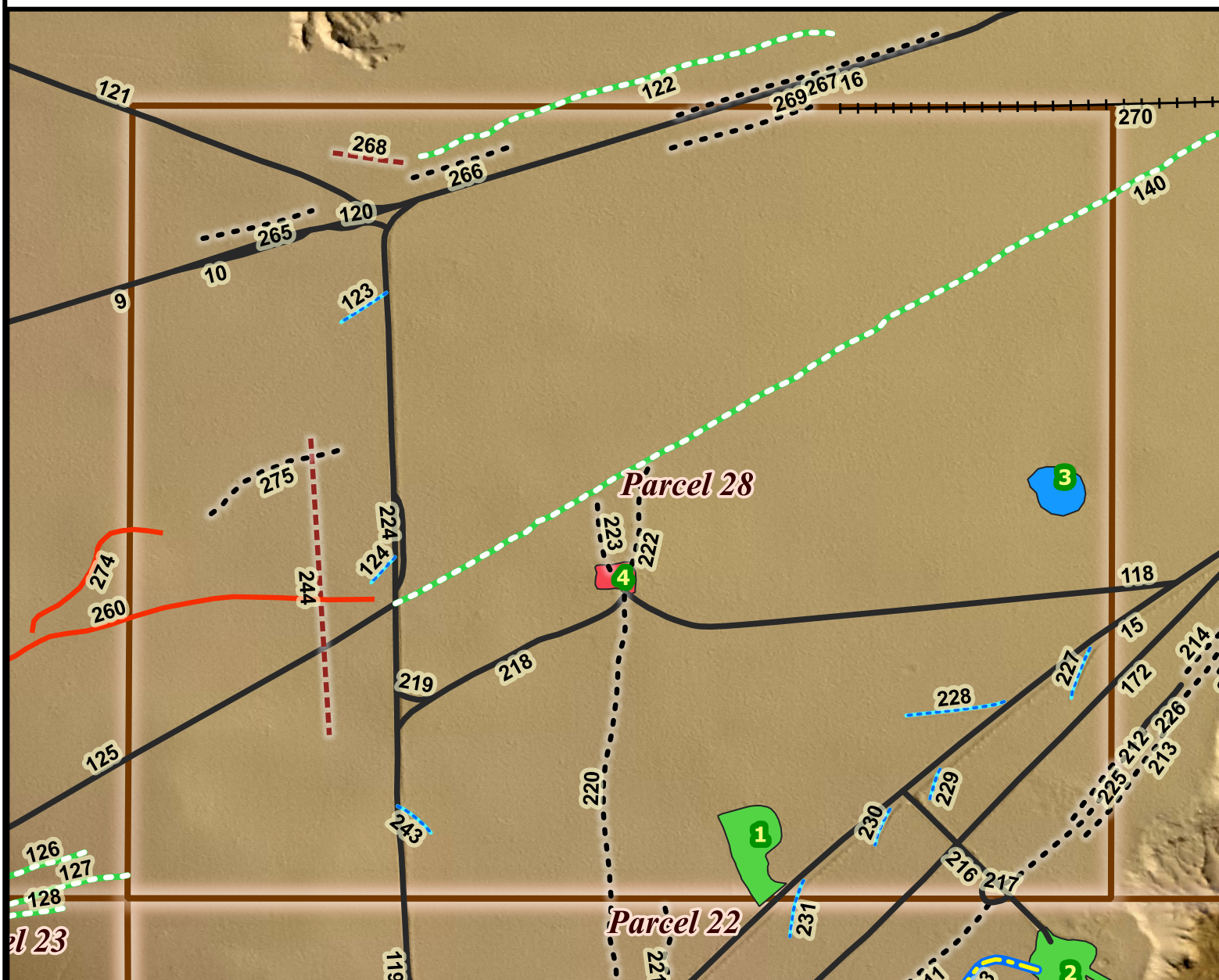




## Parcel 27 Feature Listing

Feature ID	Legend Group	Type	Comments
15	Road or Two Track	Maintained Road	
147	Road or Two Track	Maintained Road	Shows signs of occasional maintenance and moderate construction
155	Road or Two Track	Two Track	Probably Abandoned - possibly an old pipeline road
180	Old Road, Two Track, or Trail	Abandoned Two Track	Probable abandoned two track
181	Old Road, Two Track, or Trail	Abandoned Two Track	Probable abandoned two track
182	Old Road, Two Track, or Trail	Abandoned Two Track	Probable abandoned two track
183	Old Road, Two Track, or Trail	Abandoned Two Track	
184	Old Road, Two Track, or Trail	Abandoned Two Track	
185	Old Road, Two Track, or Trail	Probable Abandoned Two Track	
186	Old Road, Two Track, or Trail	Probable Abandoned Two Track	
187	Old Road, Two Track, or Trail	Abandoned Two Track	
188	Old Road, Two Track, or Trail	Abandoned Two Track	
189	Old Road, Two Track, or Trail	Abandoned Two Track	
190	Old Road, Two Track, or Trail	Abandoned Two Track	
191	Stock, Game, Hiking, or Horse Trail	Linear Feature Unknow Origin	Very narrow and faint trace that does not match expected natural topographic features

# Parcel 28



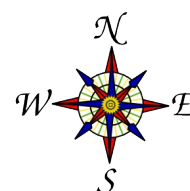
Map and Data  
Created by:  
Richard Friedman  
August 2018  
for:

 Archaeology Southwest

100 0 100 200 300 400 m



Scale in Meters



# Parcel 28 Feature Listing

Page 1 of 2

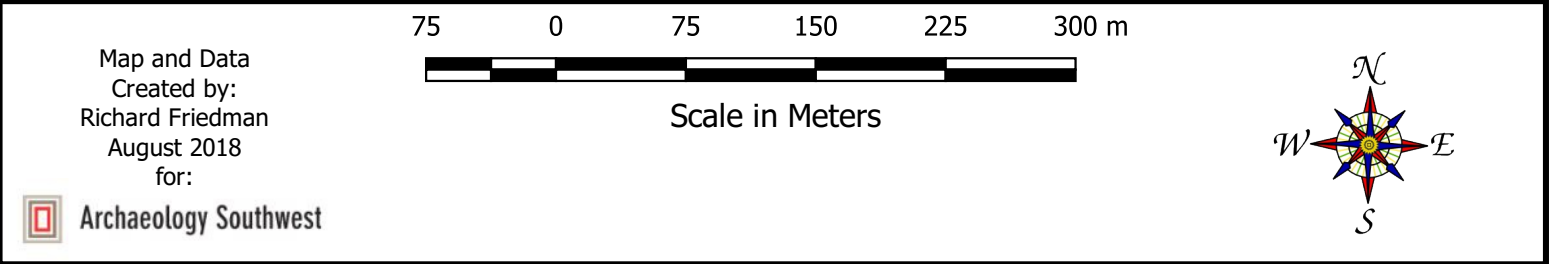
Feature ID	Legend Group	Type	Comments
9	Road or Two Track	Two Track	Shows indications of previous maintenance - appears to still be in use
10	Road or Two Track	Two Track	Parallel alternate trail to Index-10
13	Underground Water Line	Water Line	Underground
15	Road or Two Track	Maintained Road	
16	Road or Two Track	Two Track	Appears to be occasionally maintained - probable pipeline road
118	Road or Two Track	Two Track	
119	Road or Two Track	Two Track	Shows signs of construction/maintenance
120	Road or Two Track	Two Track	
121	Road or Two Track	Two Track	
122	Stock, Game, Hiking, or Horse Trail	Game/Stock Trail	Probable old game/stock trail - very narrow
123	Drainage Ditch	Drainage Ditch	Probable road drainage ditch
124	Drainage Ditch	Drainage Ditch	Probable road drainage ditch
125	Road or Two Track	Two Track and Game/Stock Trail	Appears to be an abandoned Two track that is now a game/stock trail
126	Stock, Game, Hiking, or Horse Trail	Stock/Game Trail	Incised stock/game trail
127	Stock, Game, Hiking, or Horse Trail	Stock/Game Trail	
128	Stock, Game, Hiking, or Horse Trail	Stock/Game Trail	
140	Stock, Game, Hiking, or Horse Trail	Stock/Game Trail	Abandoned two track now used as a stock/game trail
172	Road or Two Track	Two Track	Poor condition - some sections appear impassible
209	Road or Two Track	Two Track	
211	Old Road, Two Track, or Trail	Abandoned Two Track	
212	Old Road, Two Track, or Trail	Abandoned Two Track	
213	Old Road, Two Track, or Trail	Abandoned Two Track	
214	Old Road, Two Track, or Trail	Abandoned Two Track	
215	Old Road, Two Track, or Trail	Abandoned Two Track	
216	Road or Two Track	Two Track	Road to home site
217	Road or Two Track	Two Track	
218	Road or Two Track	Two Track	
219	Road or Two Track	Two Track	
220	Old Road, Two Track, or Trail	Old Two Track Stock/Game Trail	
221	Old Road, Two Track, or Trail	Abandoned Two Track	
222	Old Road, Two Track, or Trail	Probable Stock Game Trail	Very narrow and faint linear trace
223	Old Road, Two Track, or Trail	Probable Stock Game Trail	Very narrow and faint linear trace
224	Road or Two Track	Two Track	Alternate bad weather route
225	Old Road, Two Track, or Trail	Probable Old Two Track	
226	Road or Two Track	Two Track	
227	Drainage Ditch	Drainage Ditch	
228	Drainage Ditch	Drainage Ditch	
229	Drainage Ditch	Drainage Ditch	
230	Drainage Ditch	Drainage Ditch	
231	Drainage Ditch	Drainage Ditch	



# Parcel 28 Feature Listing

Feature ID	Legend Group	Type	Comments
232	Drainage Ditch	Drainage Ditch	
233	Drainage Ditch	Drainage Ditch	
242	Old Road, Two Track, or Trail	Probable Old Two Track	
243	Drainage Ditch	Drainage Ditch	
244	Linear Feature - Probable Old Two Track	Unknown Linear Feature	Cross section profile looks like a two track - probably very old
260	Linear Feature of Unknown Origin - 3-5m	Unknown Linear Feature	Subtle linear feature approximately 4-5m wide - seems to be flat in profile - may be an old water catchment/ditch feature associated with nearby stock pond or possibly very old road - follows general contour of dune - vegetation enhanced
265	Old Road, Two Track, or Trail	Probable Old Two Track	Parallels current road - may be an old alternate road/route
266	Old Road, Two Track, or Trail	Probable Old Two Track	Approximately 7m wide - parallels current road - may be an old alternate road/route
267	Old Road, Two Track, or Trail	Old Road	Old alternate bad weather road
268	Linear Feature - Probable Old Two Track	Unknown Linear Feature	Probable old two track - swale is approximately 3m wide
269	Old Road, Two Track, or Trail	Probable Old Two Track	Parallels current road - may be an old alternate road/route
270	Fence Line	Probable Fence Line	
274	Linear Feature of Unknown Origin - 3-5m	Unknown Linear Feature	Subtle linear feature approximately 4-5m wide - seems to be flat in profile - may be an old water catchment/ditch feature associated with nearby stock pond or possibly very old road - follows general contour of dune
275	Old Road, Two Track, or Trail	Probable Stock/Game Trail	Very faint trace - either an abandoned road or old stock/game trail

# Parcel 29



## Parcel 29 Feature Listing

Feature ID	Legend Group	Type	Comments
248	Old Road, Two Track, or Trail	Old Two Track	
249	Road or Two Track	Two Track	Probable pipeline road
250	Pipeline	Pipeline	Approximate center of pipeline scar
251	Road or Two Track	Two Track	
252	Road or Two Track	Two Track	
253	Old Road, Two Track, or Trail	Abandoned Two Track	
254	Old Road, Two Track, or Trail	Old Two Track	
255	Road or Two Track	Two Track	Shows signs of maintenance
256	Road or Two Track	Two Track	Road to home site - maintained
257	Stock, Game, Hiking, or Horse Trail	Stock/Game Trail	Probably an abandoned two track
259	Road or Two Track	Two Track	
272	Road or Two Track	Two Track	Secondary access to home site