

# Preserving a Twentieth Century Downtown

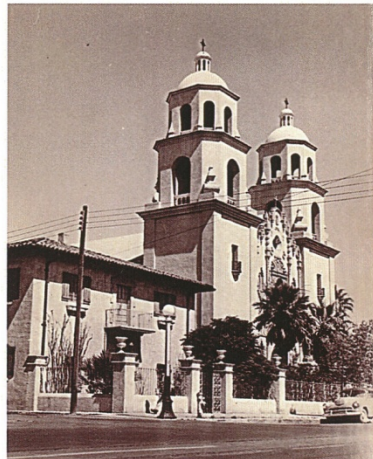
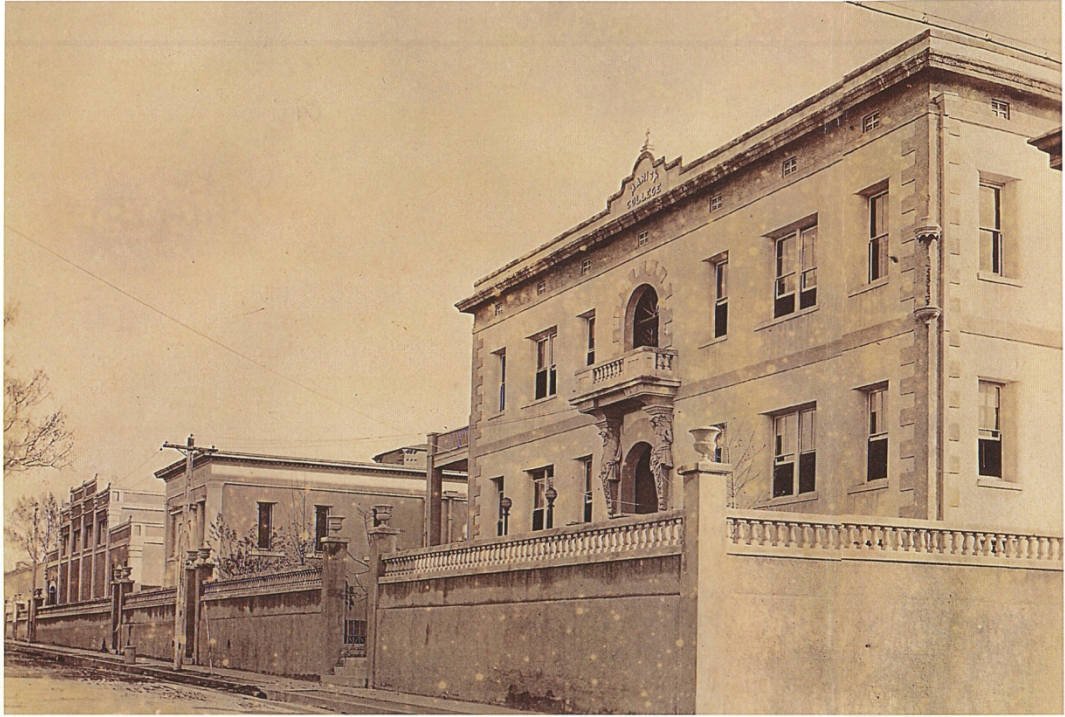
Presented on 9/4/2012 by Demion Clinco and Helen Erickson

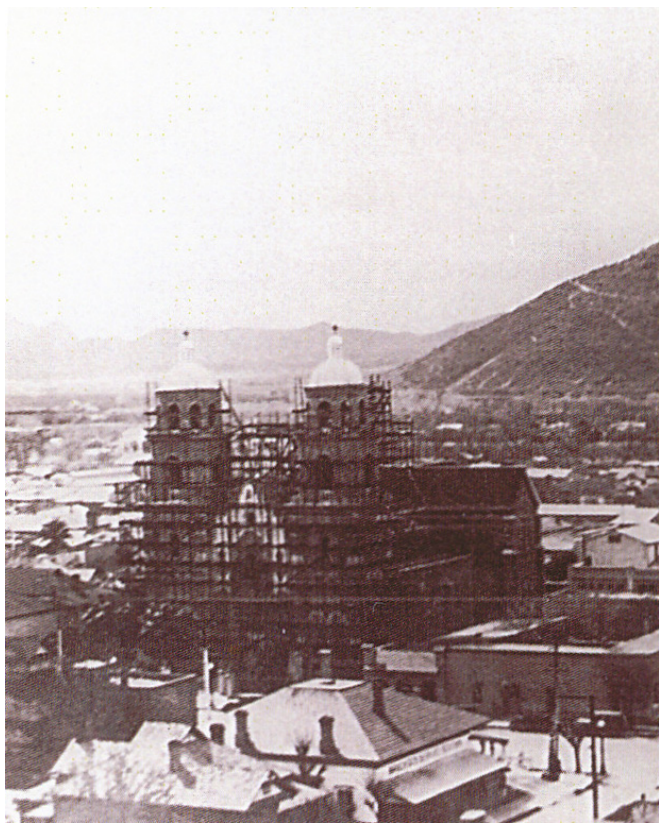


# Marist College

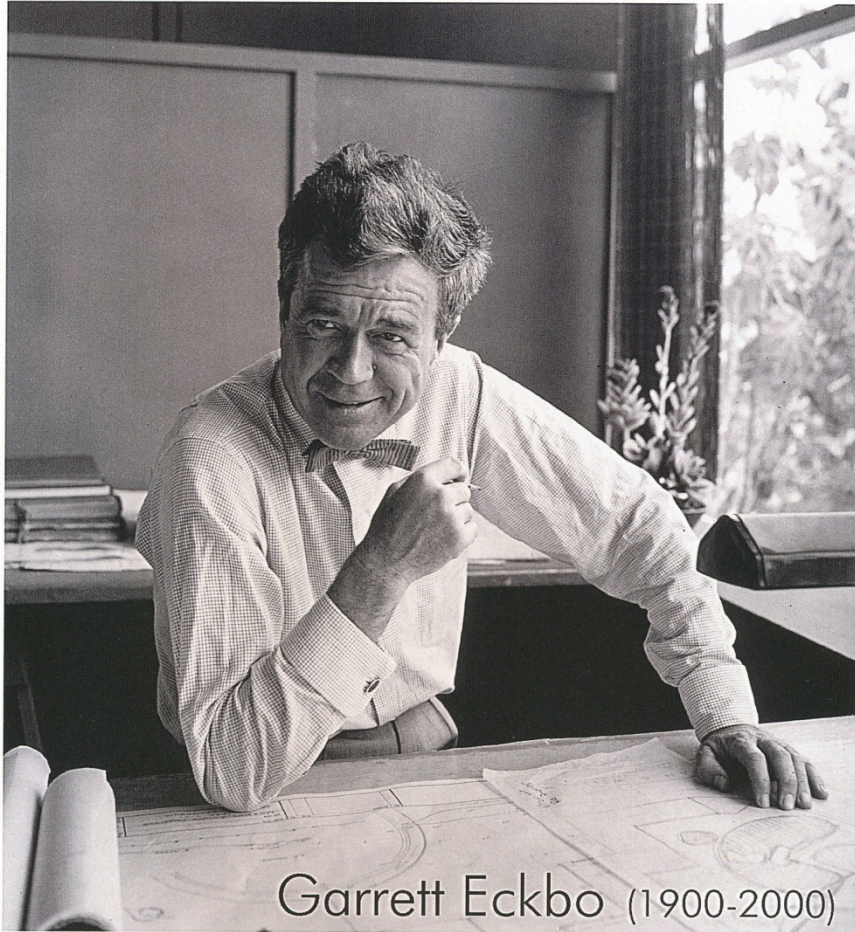
Tucson Historic Preservation Foundation











Garrett Eckbo (1900-2000)

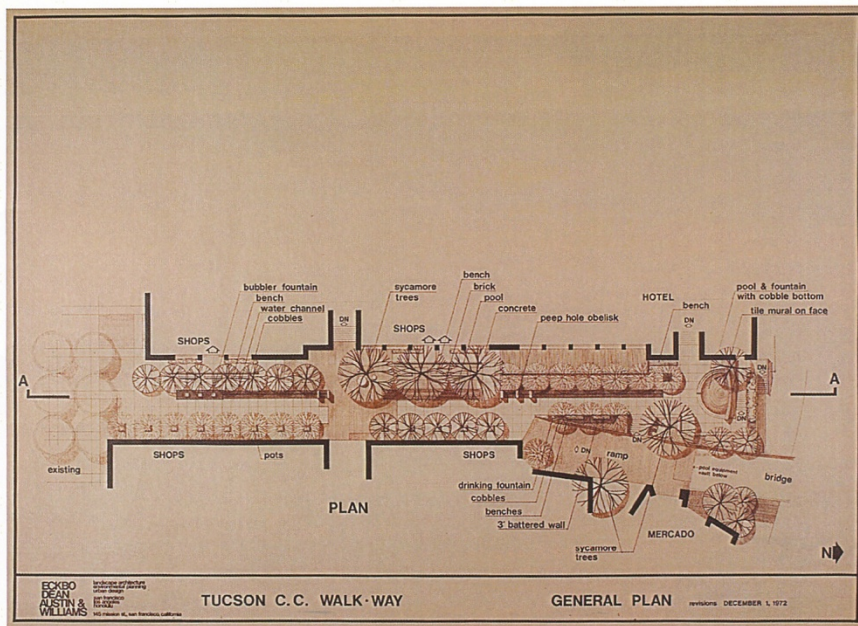
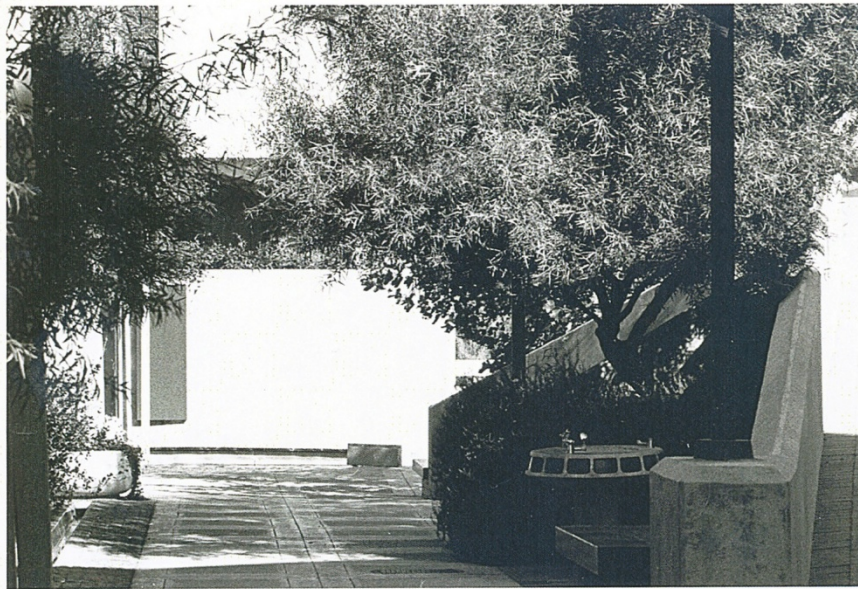
## The Tucson Community Center Landscape



The Tucson Historic Preservation Foundation

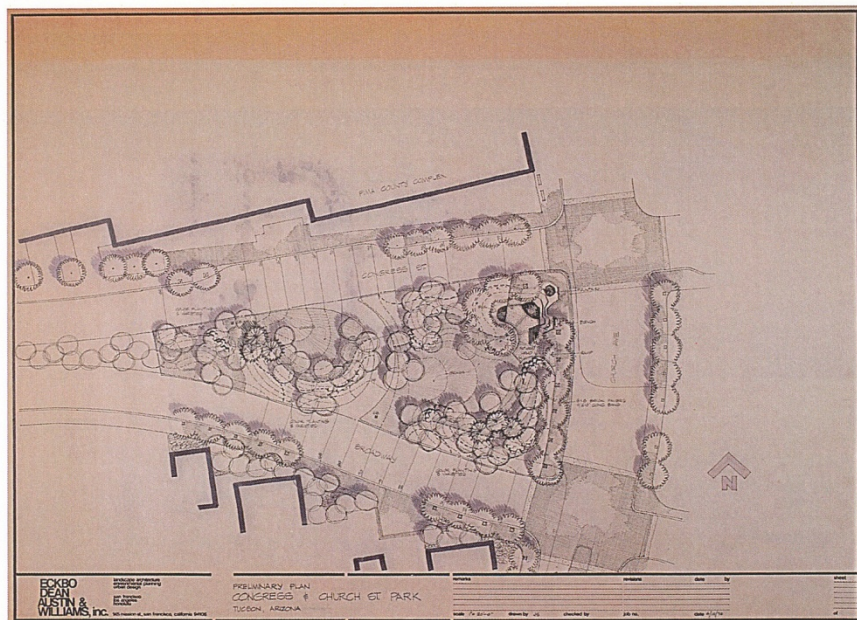


The Walkway





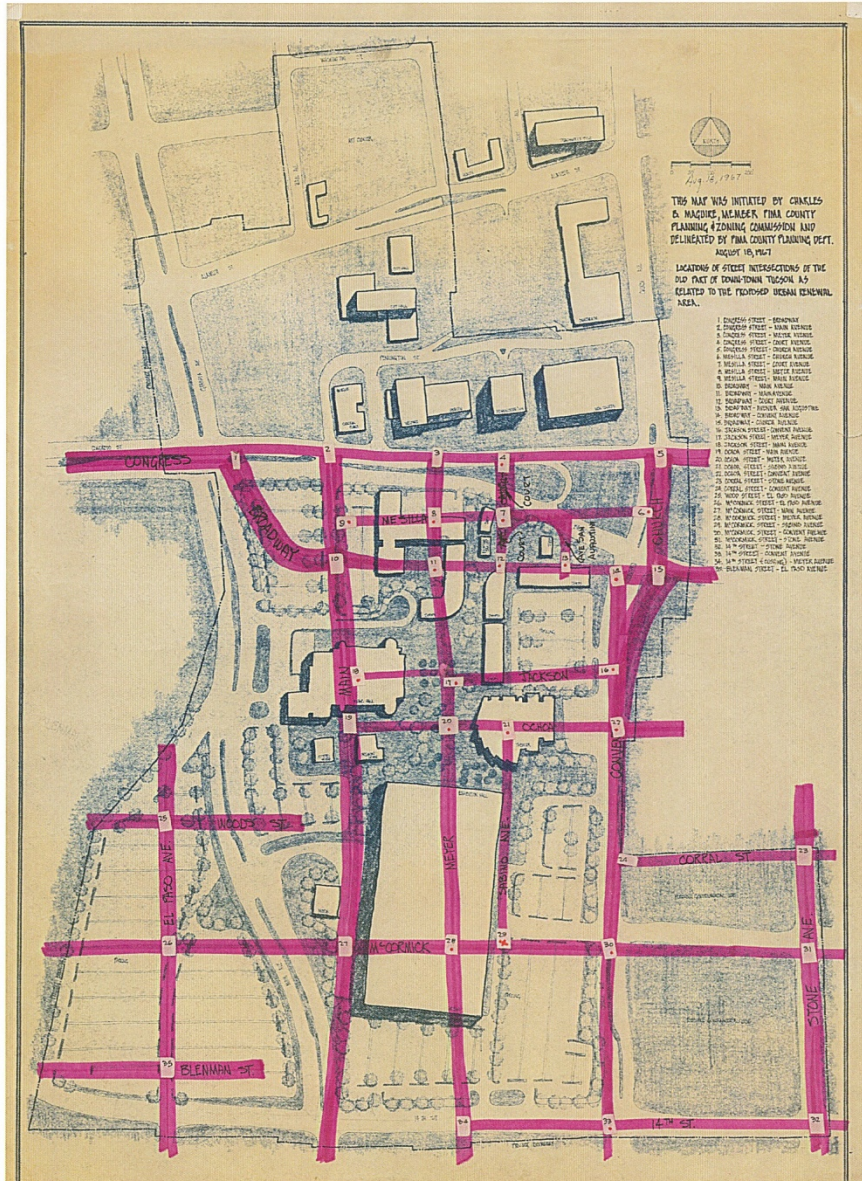
Veinte  
de Agosto  
Park



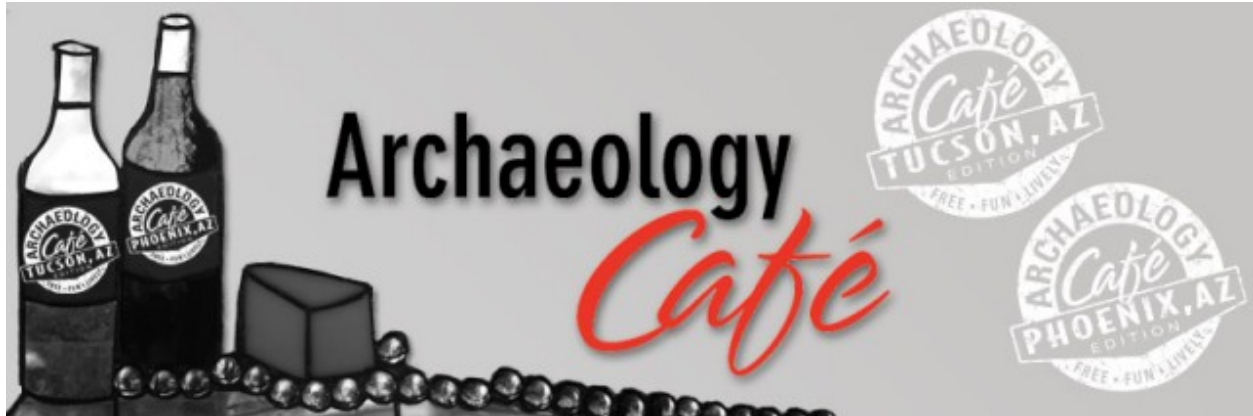
**ECKBO  
DEAN  
ALSTIN &  
WILLIAMS, P.C.**  
ARCHITECTS  
1000 EAST RIVER STREET, SUITE 200  
TUCSON, ARIZONA 85710  
TEL: 520.796.1111  
WWW.ECKBOA+W.COM

PRELIMINARY PLAN  
CONGRESS & CHURCH OF PARK  
TUCSON, ARIZONA

NO.	DATE	BY	FOR







We welcome you to Archaeology Café, an informal forum where adults can learn more about the Southwest's deep history and speak directly to experts. Archaeology Southwest's popular program, now entering its fifth season in Tucson, will debut in the Phoenix valley in the fall of 2012, thanks to additional support from the Arizona Humanities Council.

We have based Archaeology Café on [the science pub or science cafe model](#) that developed in Europe and quickly spread to major American cities. At Archaeology Café, we break down the static, jargon-laden dynamic of traditional lectures, and have an expert share some ideas with the group in ways that get discussion going. (Food and drink make things a little livelier, too.) In addition, Archaeology Southwest videotapes these events and adds them to our [digital video archive](#), where they are accessible to a global audience.

The program is free, but participants are encouraged to order their own refreshments. Although kids may attend with adult supervision, Archaeology Cafés are best for adults and young adults.

See <http://www.archaeologysouthwest.org/what-we-do/events/arch-cafe/> for more information.